

Storm Front Supply List
Jackie Mowday - Certified Studio 180 Instructor



“Storm Front” - a 4 month **Block of the Month by Linda McGibbon** using Deb Tucker’s Studio 180 Design **Diamond Rects Tool, Corner Beam** and **Large Square Squared (or Creative Grids Square on Square 8” tool)**

Supply List

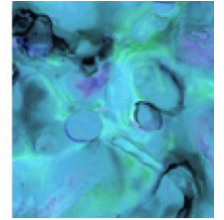
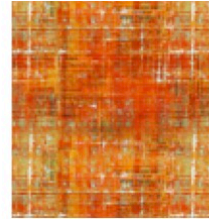
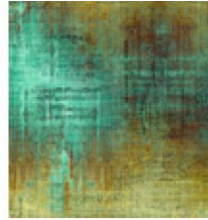
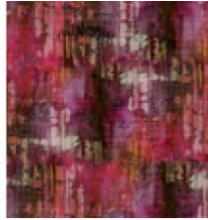
- Pattern -“ **Storm Front”** - Lakeview Quilting by Linda McGibbon (available at The Old Country Store)
- Studio 180 Design tools - **Diamond Rects tool, Corner Beam tool and Large Square Squared OR Creative Grids - Square on Square 8” trim too.** (Available at the Old Country Store)
- Paper plates - dinner size - 8.5” - 10” to help with organization
- 1” or 1 1/2” Loose leaf binder and 8 page protectors to hold pattern

Basic Sewing and Quilting Supplies -

- Sewing Machine with a new needle (**70/10 needle for batiks or 80/12 for cotton**), power cords and manual (just in case)
- Thread - 50 or 60 wt is good for piecing
- Seam ripper
- Scissor snips
- Extra fine pins - Clover Patchwork Extra Fine Pins Or Magic Pins - extra fine for precision pinning.
- Rotary Cutter with a sharp blade
- Small cutting mat - 12” x 12” or larger
- Marking pen or pencil - (frixion pen or marking pencil such as Sewline)
- Straight edge ruler 4.5” x 8.5” or larger
- Invisigrip or true grips highly recommended for for back of tools to prevent slipping

FABRIC REQUIREMENTS for "STORM FRONT"

(These are the fabrics used in the cover quilt to help you with fabric choices and placement)



FABRIC 1 - Background	FABRIC 2	FABRIC 3	FABRIC 4	FABRIC 5	FABRIC 6
5 5/8 yards	1 5/8 yards	2 yards includes binding	2 1/2 yards	1 1/2 yards	1/4 yard

***If you have any questions about fabric selection or supply list please email me at journeyquilting@yahoo.com or call 484-614-2116
Jackie Mowday (Certified Studio 180 Design Instructor)***

