

## BERNINA Embroidery Club – February 2024 Heart Hot Pad Supply List



During this class we will piece and quilt a heart in the hoop. After finishing the embroidery portion, we will add borders and complete the project so you can use it under your hot serving dishes to protect your counter or table. The project is fun and easy to construct and will make a great hostess gift or treat for yourself.

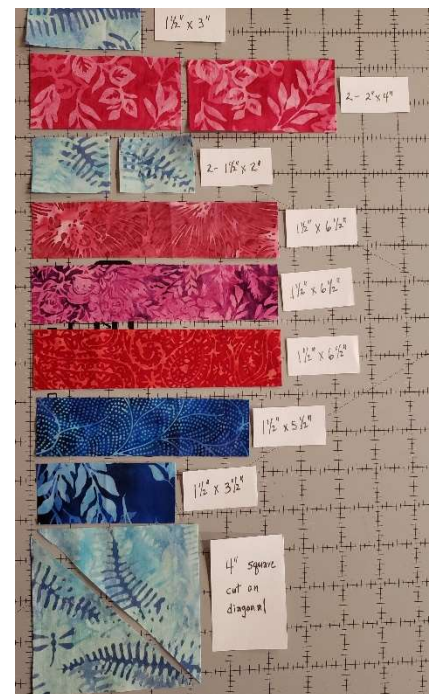
Please review this supply list and bring the requested items to class. Regarding fabric, quilter's cotton works best.

**Underlying Fabric** – 1, 10" x 14". Choose a fabric that won't show through any of your patches (e.g., plain fabric works best). This fabric will be completely covered and not seen.

**Patch Fabric:** (Due to size, most pieces can come from your stash.)

- 1, 1 ½" x 3" for top row center. This should match the border fabric.
- 2, 2" x 4" for top row left and right of heart. Sample is shade of red.
- 2, 1 ½" x 2" for top row left and right corners. This should match the border fabric.
- 1, 1 ½" x 7" for row #2. Sample is shade of red.
- 1, 1 ½" x 7" for row #3. Sample is shade of red.
- 1, 1 ½" x 7" for row #4. Sample is shade of red.
- 1, 1 ½" x 5 ½" for row #5. Sample is shade of blue.
- 1, 1 ½" x 3 ½" for row #6. Sample is shade of blue.
- 1, 4" square cut in half on the diagonal for the left and right bottom corners. This should match the border fabric.

**Border Fabric** – at least 32" of 2" side strip. Can be width of fabric x 2", to be safe.



**Backing/Binding Fabric** – Bring a piece at least 10” x 12”.

**Stabilizers:**

- OESD PolyMesh Cut-away – 1, 10” x 14”
- OESD Fuse and Fleece – 1, 8” x 10”. Center and press to back of Underlying Fabric. The 10” sides of the fuse and fleece should be centered on the 14” sides of the underlying fabric.

**Low Loft Batting** – Bring a piece at least 8” x 10” of Warm and Natural or Quilter’s Dream.

**Insul-Bright** – Bring a piece at least 8” x 10”.

**Isacord Threads:**

- Color to sew patches. This color will not be seen.
- Color to quilt inside the heart. This color could also be used to sew patches together.
- Color to match border fabric.
- Color to match backing/binding fabric.

**Bobbin thread:**

- Sereline for embroidery/quilting
- Color to match backing/binding fabric.

**Needle** – Embroidery or Microtex 80/12 or, 90/14

**Embroidery machine** – bring your machine, module, cords, foot control, etc.

**Feet** - #26 (embroidery), #37/57/97 (1/4” foot), and #20 (open toe)

**Hoop** – Large oval

**Stitch plate** – Single-hole 0mm (if you have one) and regular

**Other:**

Scissors for thread	Tweezers
Rotary cutter	Wonder Clips
Ruler	Pins
Flash Drive	Pressing tool, or you can use your finger

Call or email with questions. Wanda Hertzog-Grant, 717-572-6814 (leave a message if I don’t answer) or [wmhgstitches@gmail.com](mailto:wmhgstitches@gmail.com)